



Proteome Discoverer 3.2

CHIMERYs Demo Installation Guide

Revision A • November 2024

Table of Contents

Chapter 1	Instructions for CHIMERYS demo accounts	3
	Install the Proteome Discoverer 3.2 demo	3
	Connect to the CHIMERYS service	4
Chapter 2	Legal notices	8
	Copyright and trademarks	8

Instructions for CHIMERYS demo accounts

If you would like to demo CHIMERYS, follow the topics in this guide in order. Contact us at chimerys.demo@thermofisher.com if you have trouble completing a topic or if you would like to provide feedback.

Install the Proteome Discoverer 3.2 demo

Procedure

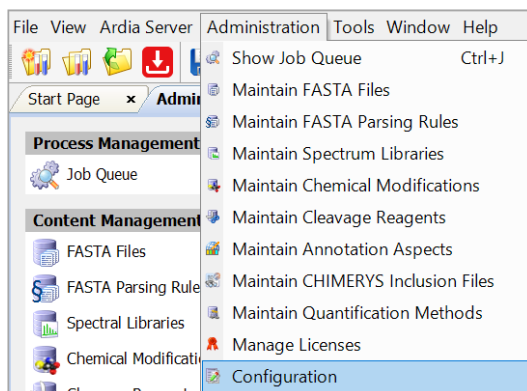
1. Open a web browser and navigate to the software download site at thermo.flexnetoperations.com.
2. Login to the software download site. If you do not yet have an account, register [here](#) free of charge.
3. The software can be found by selecting the **Product List** link under Software & Services in the navigation pane on the left.
4. To locate the software, select the **Product List** link under Software & Services in the navigation pane on the left, then do the following:
 - a. Select the **Application – Proteome Discoverer** link.
 - b. Select the **Proteome Discoverer 3.2** folder.
 - c. Select the **Thermo Proteome Discoverer 3.2.exe** link on the right.
5. After downloading the software, install Proteome Discoverer 3.2 by following the on-screen instructions of the installation wizard.

NOTE: You can also demo XlinkX or ProSightPD by downloading and installing the Thermo Proteome Discoverer ThirdParty 3.2.exe file. Both XlinkX and ProSightPD include 60-day demo licenses.

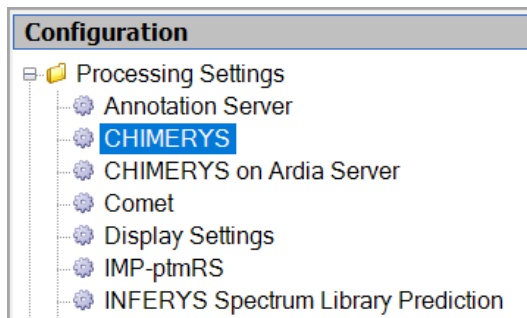
Connect to the CHIMERYs service

Procedure

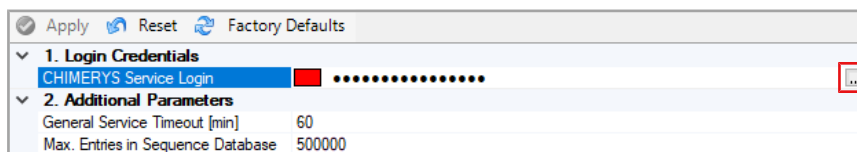
1. Open the Proteome Discoverer application.
2. From the application menu bar, select **Administration > Configuration**.



3. In the Configuration area under Processing Settings, select **CHIMERYs**.

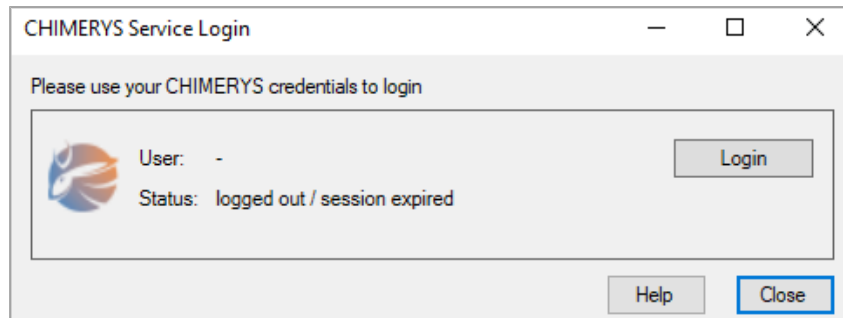


4. Select the ellipsis button on the far-right side of the CHIMERYs Service Login parameter.



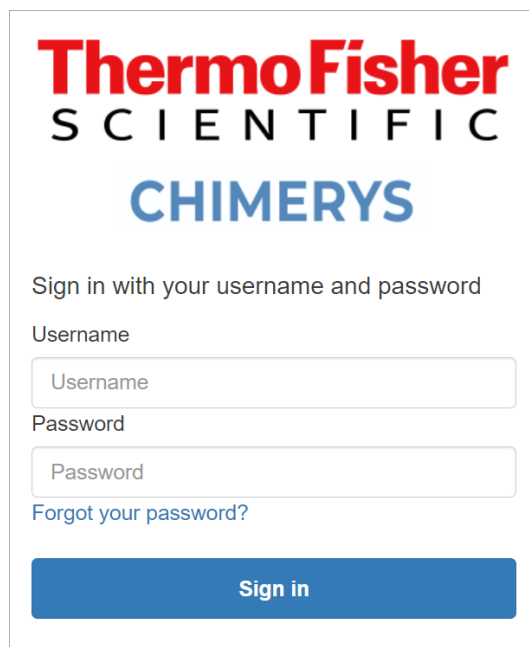
The CHIMERYs Service Login dialog box opens.

5. In the dialog box, select **Login**.



A CHIMERYs sign in dialog box opens.

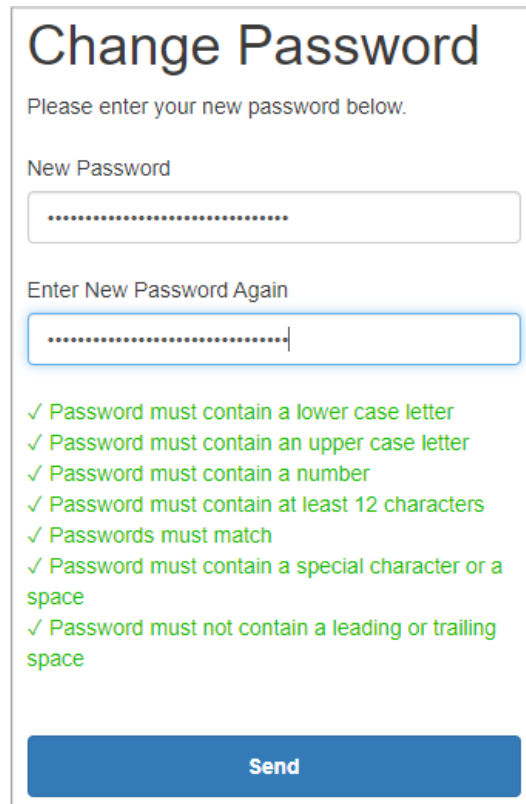
6. Enter your CHIMERYs username and temporary password.



7. Select **Sign In**.

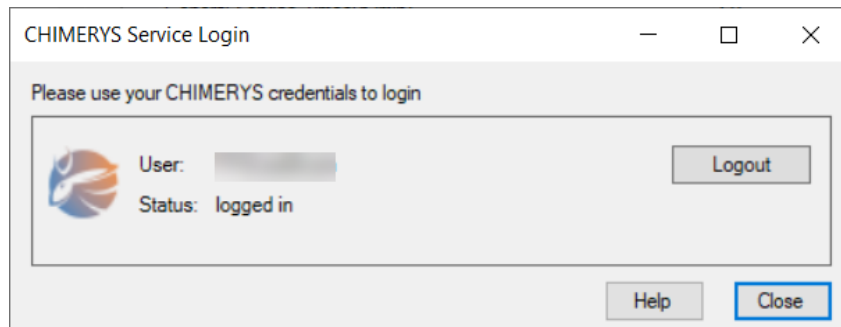
After the initial sign in, you will be prompted to change your password. The Change Password dialog box opens.

8. Enter a new password meeting the criteria in the following figure, then select **Send**.



The image shows a 'Change Password' dialog box. It has a title bar with the text 'Change Password'. Below the title bar, it says 'Please enter your new password below.' There are two text input fields: 'New Password' and 'Enter New Password Again'. Both fields contain a series of dots representing masked characters. Below the input fields, there is a list of seven password requirements, each preceded by a green checkmark: 'Password must contain a lower case letter', 'Password must contain an upper case letter', 'Password must contain a number', 'Password must contain at least 12 characters', 'Passwords must match', 'Password must contain a special character or a space', and 'Password must not contain a leading or trailing space'. At the bottom of the dialog box is a blue button labeled 'Send'.

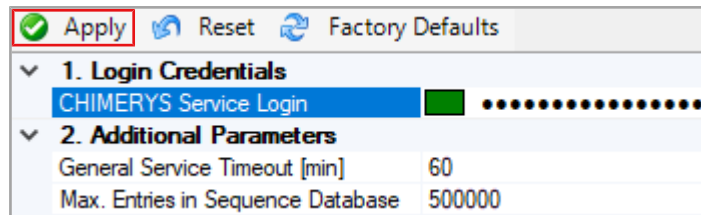
The CHIMERYYS Service Login dialog box displays the username with a logged in status.



The image shows a 'CHIMERYYS Service Login' dialog box. It has a title bar with the text 'CHIMERYYS Service Login' and standard window control buttons (minimize, maximize, close). Below the title bar, it says 'Please use your CHIMERYYS credentials to login'. There is a logo on the left side. To the right of the logo, it says 'User: [redacted]' and 'Status: logged in'. There is a 'Logout' button to the right of the status. At the bottom of the dialog box, there are two buttons: 'Help' and 'Close'.

9. Select **Close** to close the dialog box.

10. Select **Apply** at the top of the CHIMERYYS parameters screen.



NOTE: If you do not select **Apply**, you will not persist the connection to the CHIMERYYS service and you will not be able to perform searches.

An Administration dialog box opens.

11. Select **OK** to confirm the changes were saved successfully.

Thermo Fisher Scientific recommends starting with the default workflows that include the CHIMERYYS node. Each of these workflows include “CHIMERYYS” in the name and can be found in the ProcessingWF_Hybrid, ProcessingWF_Tribrid, and ProcessingWF_OT_Astral subfolders.

Legal notices

This topic provides copyright, trademark, and compliance information.

Copyright and trademarks

© 2024 Thermo Fisher Scientific Inc. All rights reserved.

Proteome Discoverer is a trademark of Thermo Fisher Scientific Inc. in the United States.

The following are registered trademarks in the United States and possibly other countries:

ProSightPD is a registered trademark of Proteinaceous, Inc.

INFERYYS and CHIMERYYS are registered trademarks of MSAID, GmbH.

All other trademarks are the property of Thermo Fisher Scientific Inc. and its subsidiaries.

Disclaimer

Thermo Fisher Scientific Inc. provides this document to its customers with a product purchase to use in the product operation. This document is copyright protected and any reproduction of the whole or any part of this document is strictly prohibited, except with the written authorization of Thermo Fisher Scientific Inc.

The contents of this document are subject to change without notice. All technical information in this document is for reference purposes only. System configurations and specifications in this document supersede all previous information received by the purchaser.

This document is not part of any sales contract between Thermo Fisher Scientific Inc. and a purchaser. This document shall in no way govern or modify any Terms and Conditions of Sale, which Terms and Conditions of Sale shall govern all conflicting information between the two documents.

For Research Use Only. Not for use in diagnostic procedures.